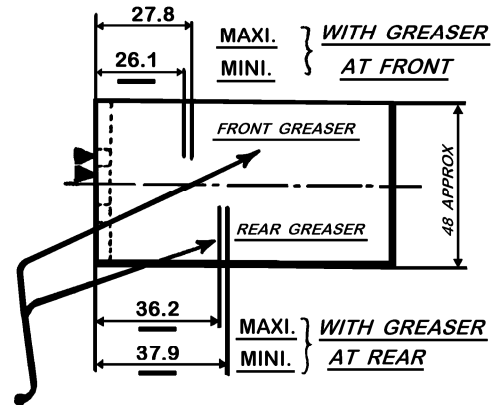
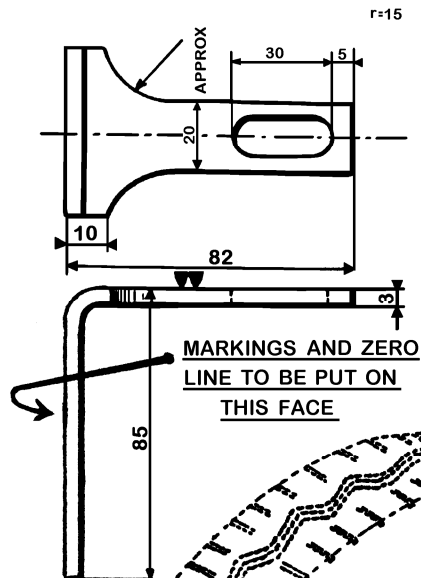


— ADJUSTMENTS —

91

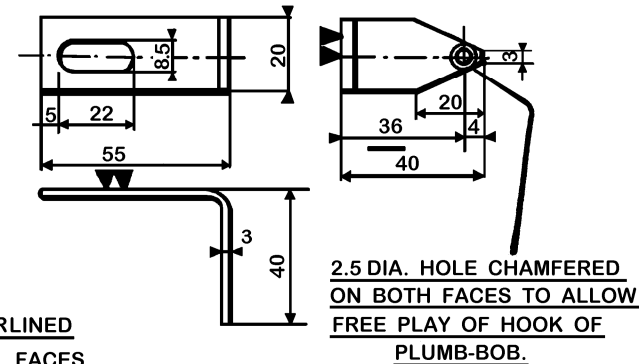
— CHECKING CASTER ANGLE —

DETAILS OF LOWER INDICATOR

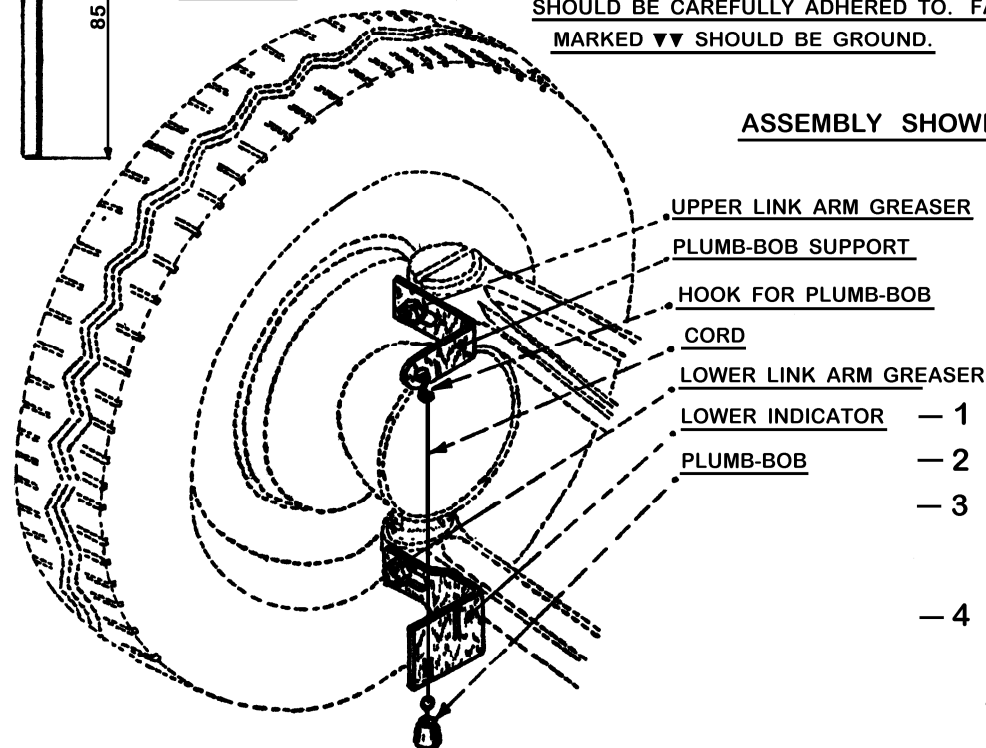


NOTE : IMPORTANT DIMENSIONS UNDERLINED
SHOULD BE CAREFULLY ADHERED TO. FACES
MARKED ▼▼ SHOULD BE GROUND.

DETAILS OF PLUMB-BOB SUPPORT



ASSEMBLY SHOWING USE OF GAUGE



MR.1767

MOUNTING GAUGE

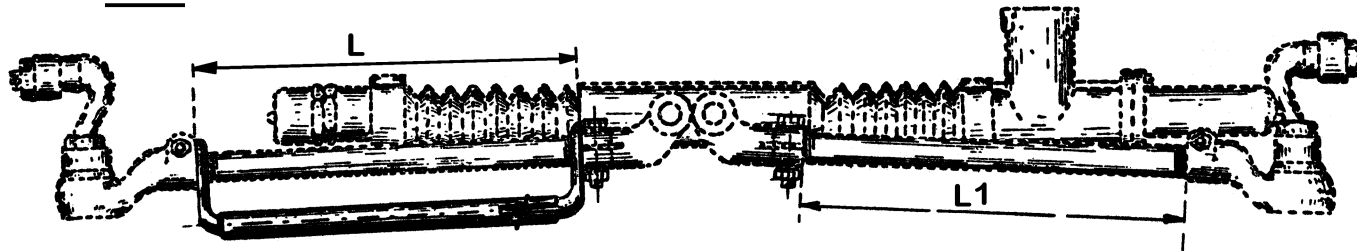
- 1 REMOVE GREASERS ON UPPER AND LOWER LINK ARMS
- 2 MOUNT BRACKETS AS SHOWN
- 3 ADJUST LOWER INDICATOR SO THAT INNER FACE IS AS NEAR CONTACT OF CORD AS POSSIBLE WITHOUT TOUCHING.
- 4 ENSURE THAT PLUMB-BOB CORD FALLS BETWEEN MARKINGS CORRESPONDING TO GREASER TAPPING USED.

— ADJUSTMENTS —

— CHECKING LENGTHS OF TRACK RODS —

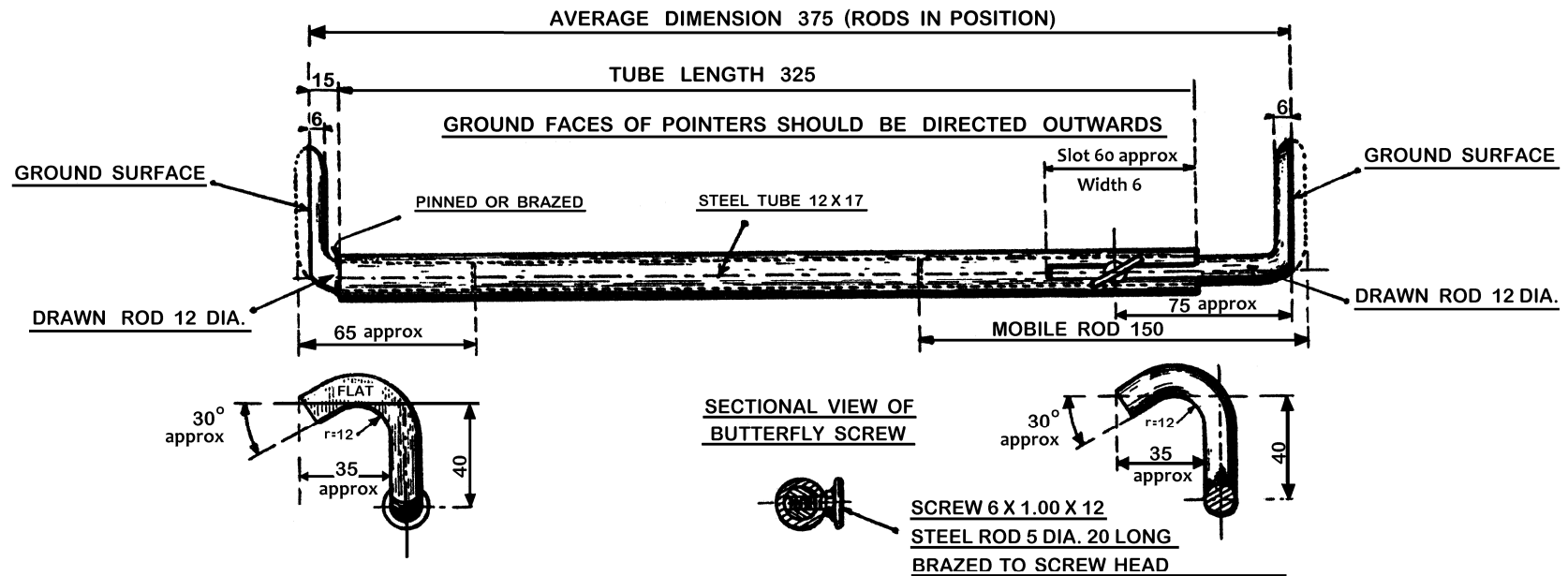
— Fig.1. —

ASSEMBLY SHOWING USE OF GAUGE



DETAILS OF GAUGE

MR1590



DISTANCE L BETWEEN SOCKET ENDS AT ONE SIDE SHOULD EQUAL DISTANCE L' BETWEEN SOCKET ENDS AT OTHER SIDE TOLERANCE 1mm
(see fig.1)

— CHECKING STEERING LOCK —

Fig.1. USE OF GAUGE.

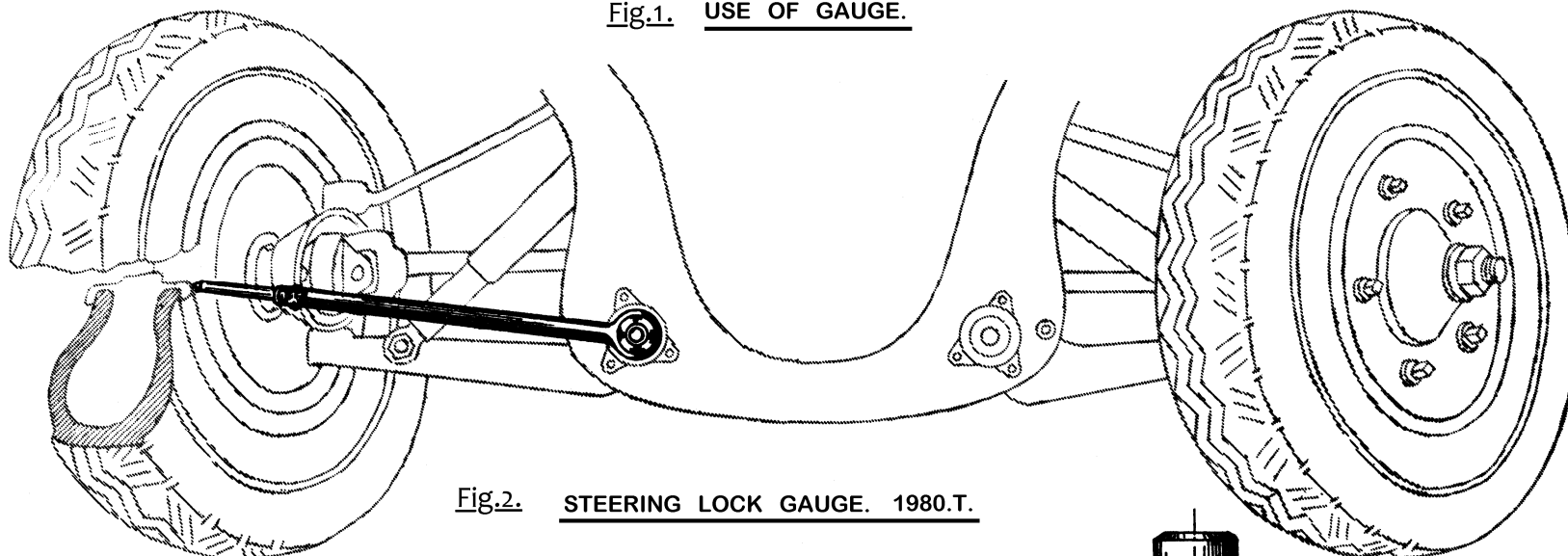
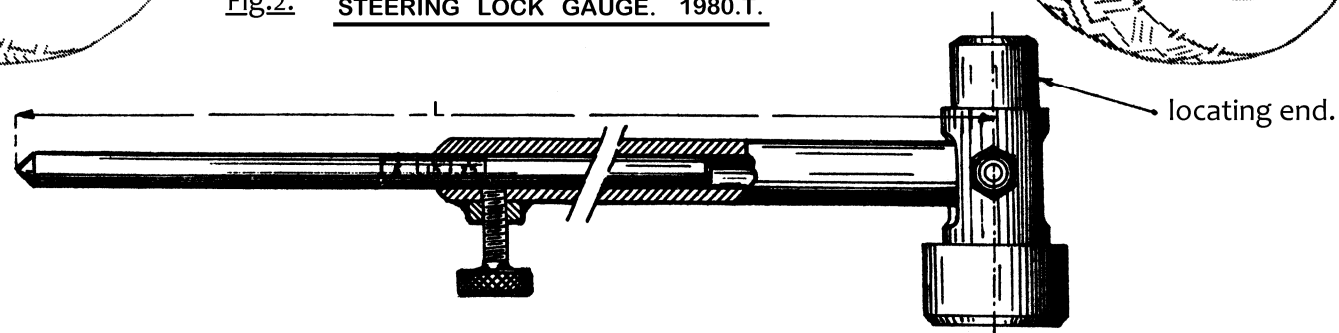
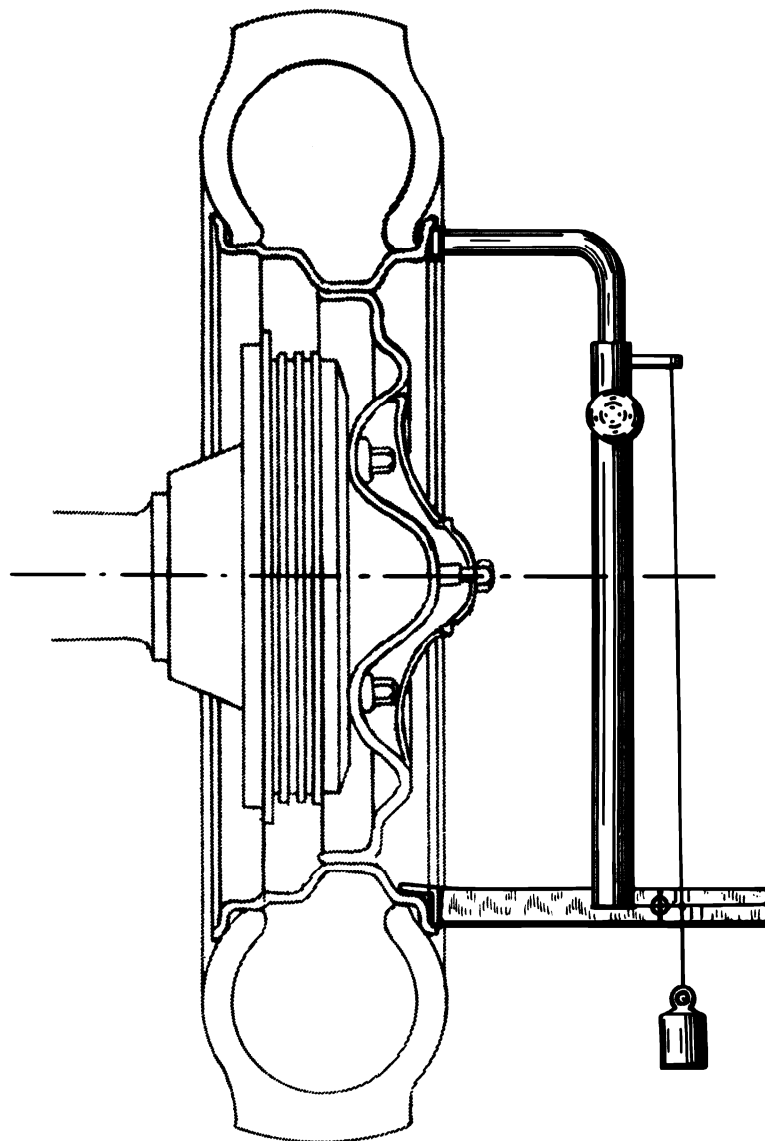


Fig.2. STEERING LOCK GAUGE. 1980.T.

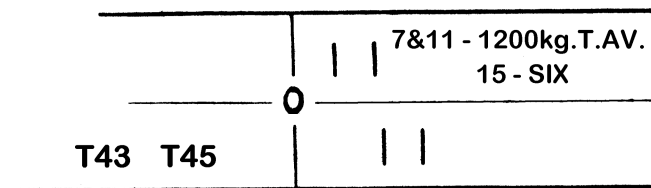


SETTING OF GAUGE.

| 7&11 FRONT WHEEL DRIVE | TYPE OF WHEEL | | READING | LENGTH 'L' |
|------------------------|---------------|-----------|---------|------------|
| | STOP | 140 x 40 | 18 | 570 |
| | STOP | 150 x 40 | 12 | 564 |
| | STOP | 160 x 40 | 5 | 557 |
| | PILOTE | 155 x 400 | 23 | 575 |
| | PILOTE | 165 x 400 | 18 | 570 |
| | PILOTE | 185 x 400 | 11 | 563 |
| | BM | 165 x 400 | 23 | 575 |

Fig.1.USE OF GAUGEFig.2.ENLARGED VIEW OF SCALE

Plumb line must rest between
two gauge lines.

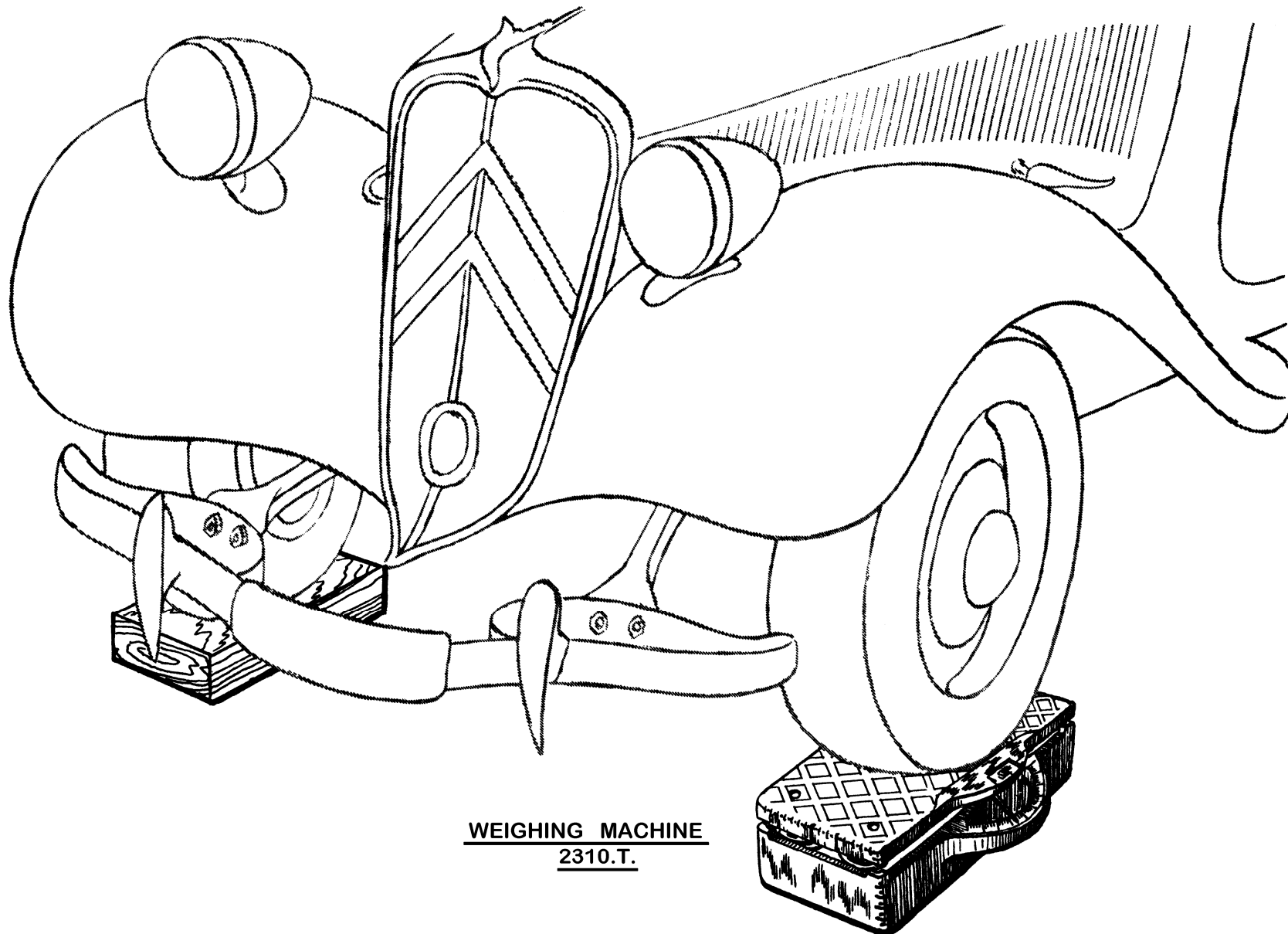


GAUGE 2314.T.

— ADJUSTMENTS —

94 A

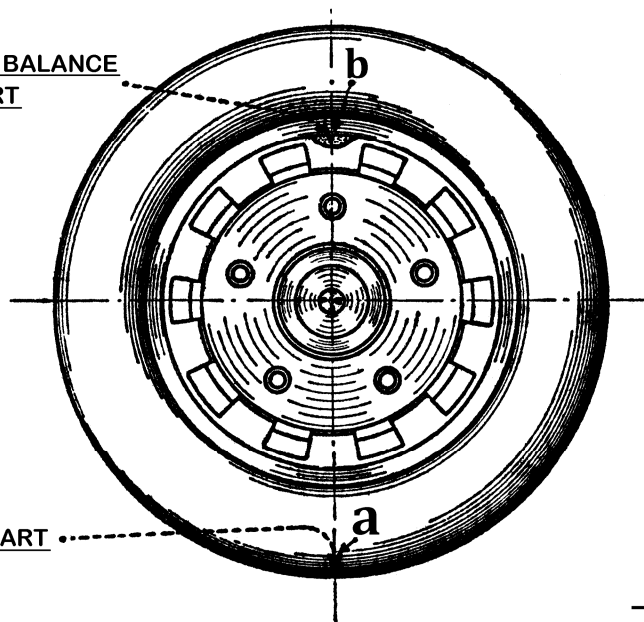
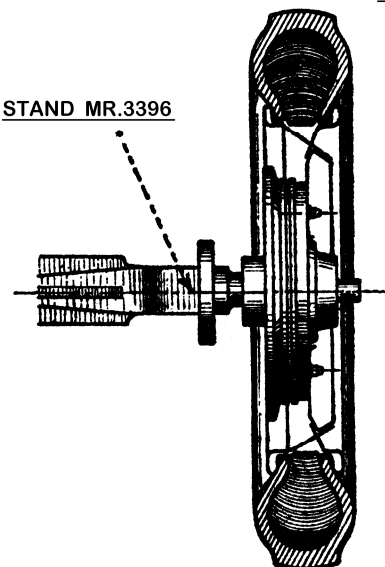
— WEIGHT DISTRIBUTION —



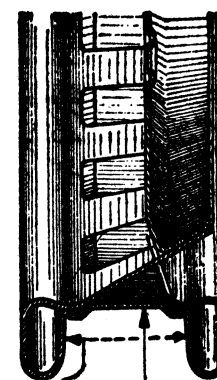
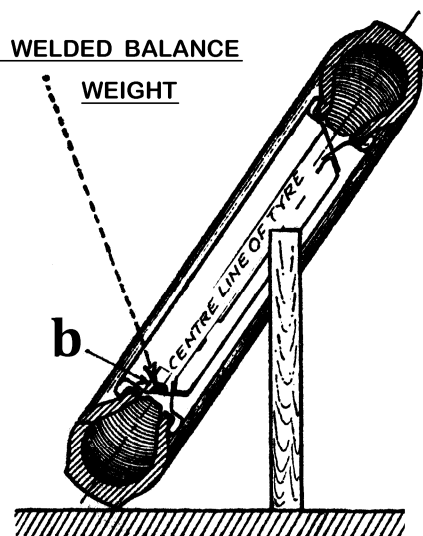
WEIGHING MACHINE
2310.T.

— ADJUSTMENTS —— CHECKING WHEELS —

— Fig.1. —

LOCATING HEAVY PARTPUTTY TO BALANCE
HEAVY PARTHEAVY PART— Fig.2. — ASSEMBLY SHOWING WHEEL MOUNTED
FOR BALANCINGSTAND MR.3396

— Fig.4. —

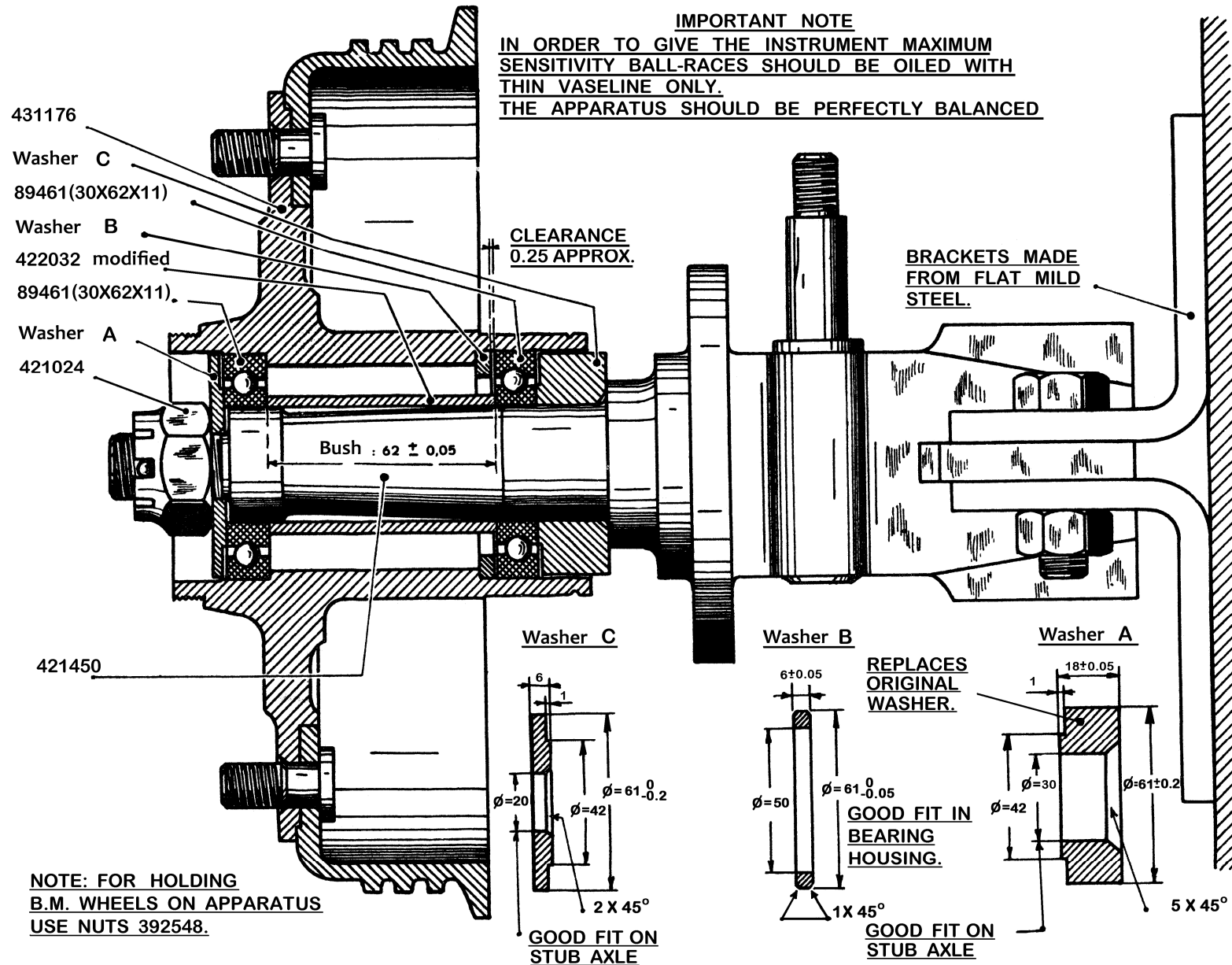
CHECKING DISTORTION OF RIMPART OF RIM ON WHICH TO
CHECK IF WHEEL IS TRUEPART OF RIM ON WHICH TO
CHECK FOR ECCENTRICITYFig.3. POSITION OF WELDED BALANCEWEIGHT

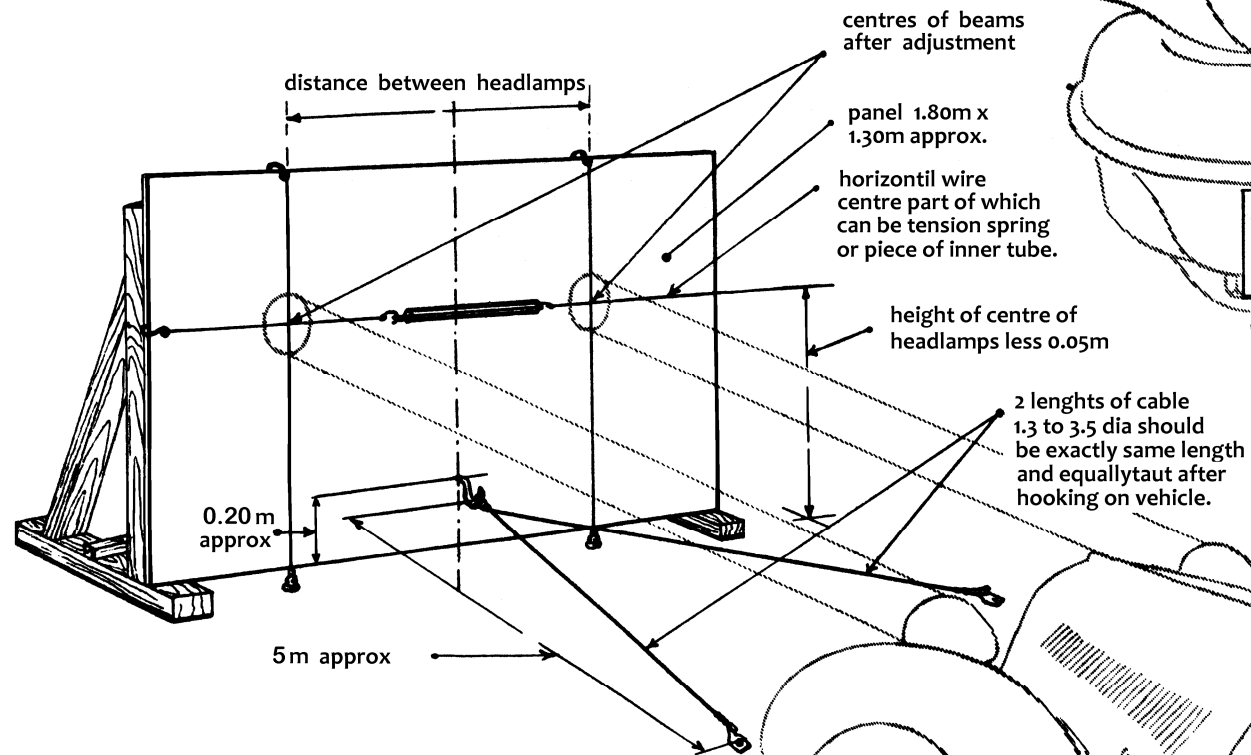
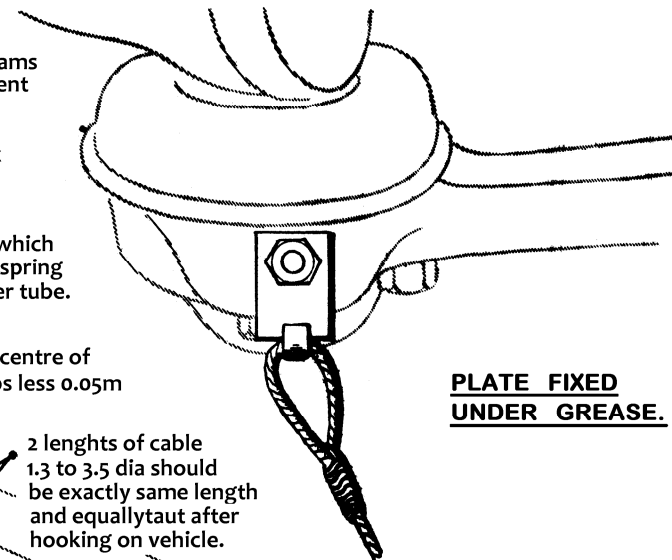
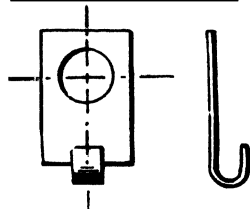
— CHECKING BALANCE OF WHEELS —

APPARATUS MR.3396.

IMPORTANT NOTE

IN ORDER TO GIVE THE INSTRUMENT MAXIMUM SENSITIVITY BALL-RACES SHOULD BE OILED WITH THIN VASELINE ONLY.
THE APPARATUS SHOULD BE PERFECTLY BALANCED



— ADJUSTMENTS —— ADJUSTING HEADLAMPS —Fig.1. SCREEN MR.1572.Fig.2. FIXING CABLES ON LOWER LINK ARM BOSS.PLATE FIXED UNDER GREASE.PLATE FOR FIXING UNDER GREASERPLATE FOR FIXING ON SCREENFig.4. HOOKS ON REAR OF SCREEN TO HOLD CABLES AFTER USE.