

INDEX

INDEX TO FRONT DRIVE, Volume 11.

An Index to Vols. 1-5 appears in Vol. 6, no.1, and to Vols. 6-10 in Vol. 11, no.2.

The references are laid out thus:
Volume no./Issue no./Page no. (or IFC, inside front cover; IBC, inside back cover).

There are six classifications:

- General
- Technical
- Specific models
- Members' cars
- Events
- Advertisements

Back numbers of Front Drive are available from Club Shop at \$1.00 each. Where an issue is out of print, a good photocopy will be supplied.

N.B. it is not possible to supply photocopies of individual articles.

GENERAL:

CCOCA awards	11/2/9
Citroen News	11/1/4
Club permits	11/6/12
Confessions of a Citrophile/1	11/5/2
	/2
11/6/4	
Red plate scheme	11/2/15
Tales of Daring Do: Smellie joins the Gestapo	11/2/6
Transplants	11/2/9

TECHNICAL:

Austin "1800" driveshaft conversion	11/4/5
Batteries	11/1/10
Blasting your body	11/1/16
Case hardening	11/3/5
Driveshaft notes	11/4/2
Gearbox/differential/4	11/3/6
Rejuvenating a battery	11/2/8

SPECIFIC MODELS:

Auervoir (2CV)	11/2/4
Half tracks in Australia	11/1/2
Half tracks: the Silver Crescent of Jacques Joubert	11/2/10

MEMBERS' CARS:

'39 Light 15, Brian & Esther Wade	11/2/2
'53 Light 15, Nigel Scott	11/6/11
'54 Big 15, Peter Simmenauer	11/1/6
'64 ID 19, Nance Clarke	11/3/2

EVENTS:

ADMC European Day 1988	11/5/5
Austraction '87	11/3/10
CCOCA Annual Barbecue 1987	11/1/22
CCOCA Concours 1987	11/5/4
CCOCA Parts Auction 1987	11/4/12
Citation	11/3/9
D conversion workshop	11/3/11
European Motor Show 1987	11/1/25
Raid '88	11/6/6
7th ICCCR Loreley	11/5/6

ADVERTISEMENTS:

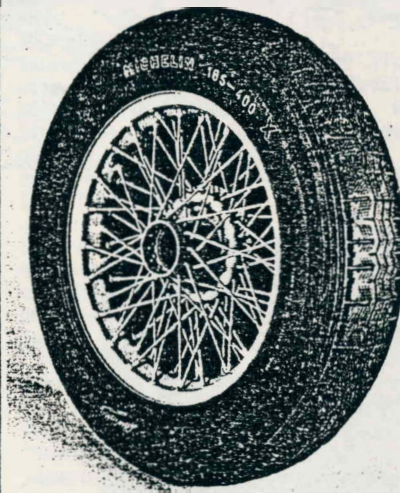
Exide/Park/Lucas Batteries	11/3/12
Comet windscreen protector	11/4/9

NEW ADDRESSES

John Couche
2/33 Boronia Road
Boronia 3155.
(03) 762 8256.
(Till about Feb. 89).

TECH TIPS**Tyres****TRACTION TYRE ALTERNATIVES**

Michelin X 165x400 tyres now cost almost \$200 each retail in Australia - very sobering to reflect on indeed! And worse, Michelin X 185x400s to go on your Big Six or Family Nine cost almost \$400 each!

After 1950**Type X STOP**

165 × 400
185 × 400

Obviously time to think out your tyre moves very carefully, even if you weren't hit by the stock market crash.

Possibility No. 1: Buy your new tyres at the best price. New CCOCA member, John Smart, is in the tyre business, and advises that the best most-recent price he can get for club members is \$144.29 for Michelin X 165x400 tyres, \$10.70 for the tube, both prices including tax.

Possibility No. 2: Repair and continue to use any damaged tyres you already have. John advises that he can repair sidewall and tread faults in Michelins (or others no doubt). He believes these are then OK for use on the rear of the car. His charge to club members is \$10 per repair.

Possibility No. 3: Retread your existing worn-down tyres. John advises that some BANDAG re-treaders carry suitable moulds for 165x400s. These do not have the Michelin X pattern, but the harder composition of the BANDAG rubber will give "twice the life of a new tyre". There are also a few places in Australia and New Zealand which will retread with the Michelin X pattern.

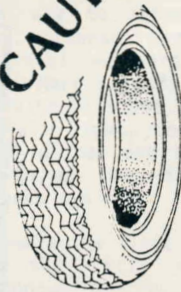
Possibility No. 4: Fit 16 inch tyres instead of 400 mm. The 16s are only 6.4 mm bigger in diameter at the bead than the 400s i.e 3.2 mm or 1/8 inch all round. In theory, the 16s should grip once centred and inflated, especially if a 1/8 inch packing strip was to be attached round the rim shoulder beforehand. For example, Antique Tyre Supplies in Heidelberg have 185x16 textile radial Firestones at \$195 each, and it might be tempting to consider these as an alternative for your Big Six or Family Nine. However, John does not recommend this as the bead

NEW TYRE SIZES**Firestone**

450x21
DELUXE CHAMPION

450x21 Firestone Deluxe Champion 4 ply tyre suitable for Ford A, Chevrolet, Whippet etc. Top quality Firestone product.

\$110.00 TYRE & TUBE

CAUTION! SIZES

185x16
SPORT 200

185x16 Textile Radial Tyre. This is a new mould made with Firestone's famous Sport 200 Pattern. Now available exclusively from Antique Tyre Supplies.

ANTIQUY TYRE SUPPLIES

134 McEwan Road, West Heidelberg. Phone 03. 458 4433

SYDNEY: BASIL KEIR (02) 789 4174

Fax: 03-458 4795

ADELAIDE: KEVIN FIELD (08) 297 5191

RESTORED CARS, No. 77 - Page

FRONT DRIVE



shape of the Firestones does not match the Citroen rim shoulder angle, and they are inclined to come off during inflation.

Possibility No. 5: Have your wheels modified to accept more commonly available tyre sizes e.g. 16 inch or 15 inch. This could be the topic for a later technical note.

If you want to discuss the matters above, please contact John Smart directly.

W.G.

Phone: 729 6794

Smarts Tyre Repairs Pty. Ltd.

208 Canterbury Road, Bayswater 3153



THE TYRE REPAIR SPECIALISTS

All Sizes Bias & Radial

JOHN SMART MGR.